



INSTALLATION GUIDE

LSV-100P

Mounting Bracket and Pedestal for LSV-100 Charger



ETEC Corporation
430 S. 2nd Avenue
Phoenix, Arizona (USA) 85003
Phone: (602) 716-9576
Fax (602) 256-2606

INTRODUCTION

The LSV-100P is designed as an accessory for the LSV-100 charging system (See Figure 1.0).

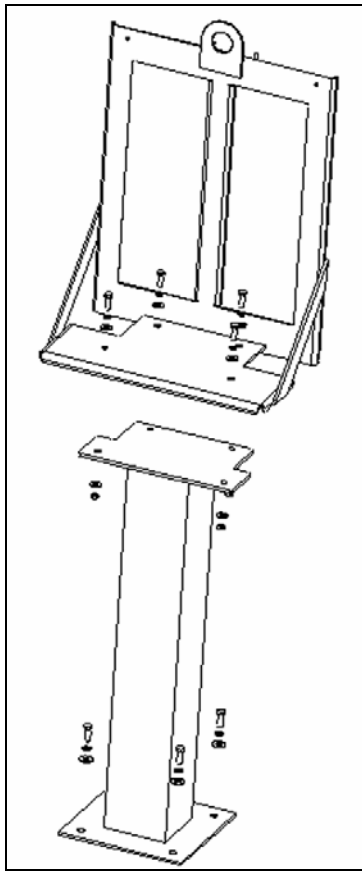


Figure 1.0 Pedestal Assembly

It allows the LSV-100 charger to be mounted in locations where wall mounting is not advisable or allowed, or in locations where the charger needs to be installed in an open area.



CAUTION!

The LSV-100P is to be used to mount the LSV-100 charger **ONLY**. It must not be used as a storage shelf, as a stepstool or as a ladder. No equipment is to be stored on the charger or pedestal once the charger is mounted to the LSV-100P.

ASSEMBLY

The LSV-100P consists of two parts; a mounting bracket and a pedestal. The mounting bracket mounts to the back of the LSV-100 enclosure using the supplied mounting cleats. The pedestal mounts to the bracket to support the assembly.

Carefully unpack the LSV-100P and locate the following components:

- Mounting Bracket 1 ea
- Pedestal 1 ea
- ¼”-20 x 1” Carriage Bolt 4 ea
- ¼” split-ring lock washer 4 ea
- ¼” flat washer 4 ea
- ¼”-20 nylon lock nuts 4 ea
- 7/16”-14 x 1.25” Grade 5 Bolt 4 ea
- 7/16” split ring lock washer 4 ea
- 7/16” flat washer 8 ea
- 7/16”-14 Grade 5 Nut 4 ea

Begin the assembly by attaching the mounting bracket to the pedestal. Stand the pedestal upright with the square pad resting on the floor. Do NOT fasten the pedestal to the floor at this time. Carefully place the mounting bracket on the top plate of the pedestal. Arrange the bracket so that the holes in the bottom plate of the bracket align with the holes in the top plate of the pedestal. Assemble a 7/16” flat washer on a 7/16” bolt and insert into a hole in the mounting bracket bottom plate, so that the bolt is pointing down. Repeat for the remaining 3 holes. Slide another flat washer onto the bolt protruding down from the pedestal top plate and install a 7/16” nut (See Figure 2.0). Repeat for the remaining 3 bolts. Use a torque wrench to torque the 7/16” bolts to 50 lb-ft.

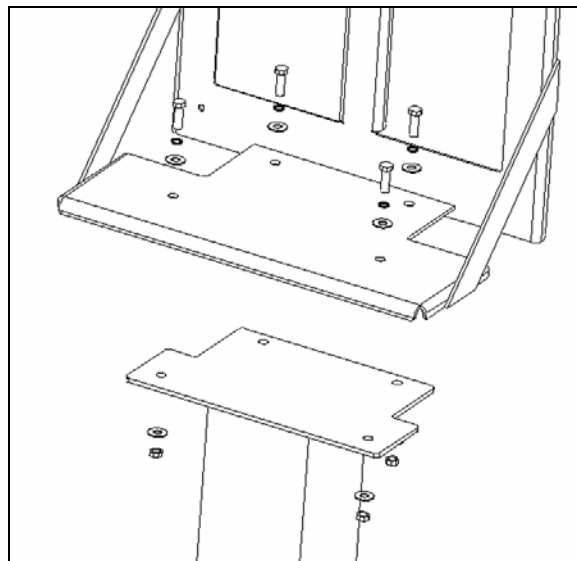


Figure 2.0

Next, assemble the pedestal assembly to the charger. The LSV-100 charger should be on the floor, removed from its shipping container and disconnected from any electrical service.



CAUTION!

Do not attempt to assemble the charger to the pedestal while the charger is attached to the electrical service. The charger must be disconnected from the electrical service before mounting on the pedestal. Turn off any electrical service before disconnecting the charger. Refer to the LSV-100 Installation and Operation manual for details.

Begin by placing a sheet of plastic, or a piece of cardboard on the ground. This will be used to protect the charger from scratches. Carefully place the charger so that it is resting on the plastic or cardboard with the door facing down. Place the mounting bracket assembly behind the charger. Have a helper tip the pedestal toward the charger. Feed the input and output cables through the square openings on the bottom plate of the mounting bracket (feed the cables from the top of the bottom plate down toward the foot of the pedestal). Continue to tip the pedestal until it is almost resting on the charger. Have a helper carefully lift the bottom of the pedestal while you align the back plate of the mounting bracket with the 4 cleats on the back of the charger. It will be handy to have a bucket or several blocks of wood to support the bottom of the pedestal at this time.

Install the 4 carriage bolts into the back piece of the mounting bracket and through the charger mounting cleats. Insert the bolts so that the head is on the backside of the back plate. **DO NOT** install any washers between the head of the bolt and the back plate of the mount. Install a ¼” flat washer on the protruding threads and install a ¼” lock nut. Repeat on the remaining 3 bolts. Use a wrench to draw the bolts into the back plate (make sure the square boss under the head of the carriage bolts is aligned with the square hole punched in the back plate of the mounting bracket). Use a torque wrench to tighten the bolts to 10 ft-lb.

INSTALLATION

Before attempting to install the charger and pedestal assembly, the final location for the charger should be determined. Surface to which the pedestal will be attached should be evaluated for suitability for this purpose.



CAUTION!

The LSV-100P must be securely attached to an appropriate surface. The installer must not attempt to mount the assembly to bare dirt, gravel, grass or other non-

structural surface. Mounting surfaces must be in good condition and capable of supporting the load of the assembly and loads related to the operation of the charger. The installer must carefully inspect the mounting surface and determine its suitability for mounting the charger assembly.

Use a forklift (or other suitable lifting device) to raise the charger/pedestal assembly by placing a lifting hook in the lift eye at the top of the mounting bracket. Slowly raise the forklift to raise the charger assembly—do NOT allow the lifting device to jerk on the mounting bracket. Once the charger assembly is in the upright position, move it to the final installation location.



CAUTION!

DO NOT attempt to lift the charger/pedestal assembly by hand.

DO NOT allow the charger/pedestal assembly to stand upright without adequate support! Keep the lifting device attached to the charger with sufficient tension in the lifting chain/strap to prevent the assembly from tipping over.

Four holes are provided in the bottom foot of the pedestal (10” square pattern) for fastening to the mounting surface. The installer must select and provide the appropriate anchor hardware to match the mounting surface (See Figure 3.0 for an example). The charger weighs approximately 250lbs, so an adequate concrete pad should be utilized to ensure the pedestal will be secure. We recommend a minimum of 24” x 24” x 18” Deep concrete pad. Provide No.4 rebar spaced six inches on center overlapping.

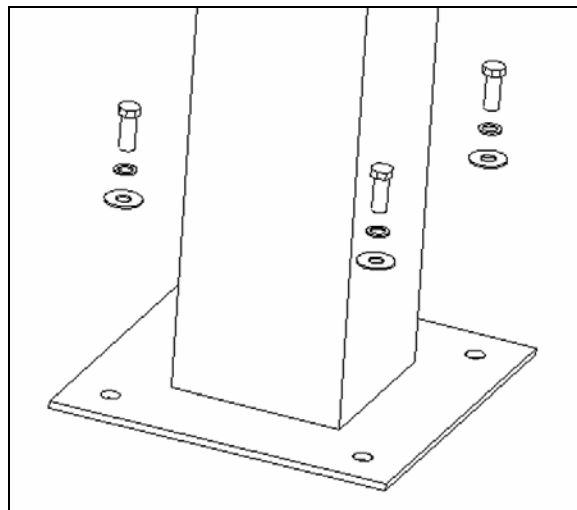


Figure 3.0 Base Plate – (See Base Plate Detail Attached to this Document)



CAUTION!

Make sure that the charger/pedestal assembly is securely anchored before releasing from the lifting device. DO NOT allow the charger to be electrically connected or operated until it is securely anchored to the mounting surface.

ELECTRICAL ACCESS

Electrical access can be achieved either direct from the charger to a wall or otherwise mounted disconnect utilizing the provided 6' of flex from the charger, or through the center of the pedestal entering in the bottom of the plate through the provided 3" hole.

Access plates are provided for various penetration points based on the installer's preference. The bottom of the base plate and rear lower electrical access plate are shown in Figure 4.0 below. The base plate detail is provided as an attachment to this document.

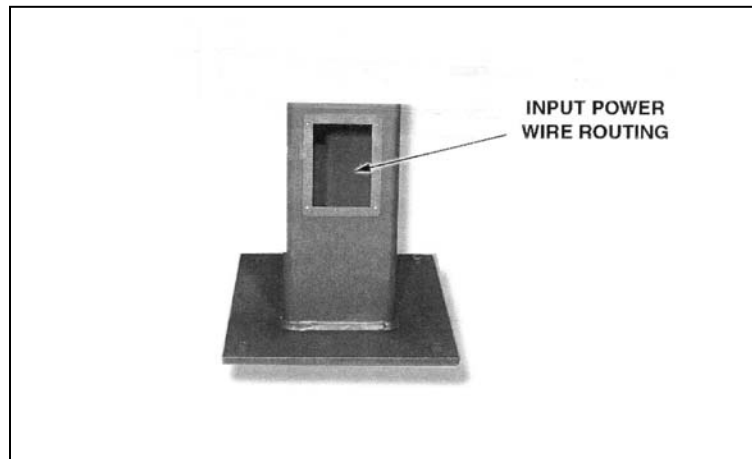
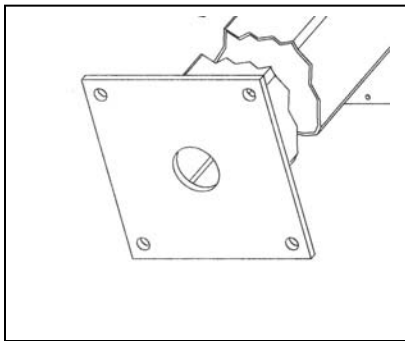


Figure 4.0 Electric Supply Access

MAINTENANCE

Very little maintenance is required for the LSV-100P. The following guidelines will keep the system safe and in good condition:

- Do not allow snow or ice to buildup around the base of the pedestal or on the mounting bracket.
- Avoid using salt de-icer around the pedestal. If salt is used, brush away any excess and frequently clean the pedestal
- If the paint becomes damaged on the pedestal/bracket assembly, touch up with a good-quality black paint designed to be used on bare steel.
- If the pedestal or mounting bracket are damaged such that a component becomes dented or twisted, the assembly must be replaced.

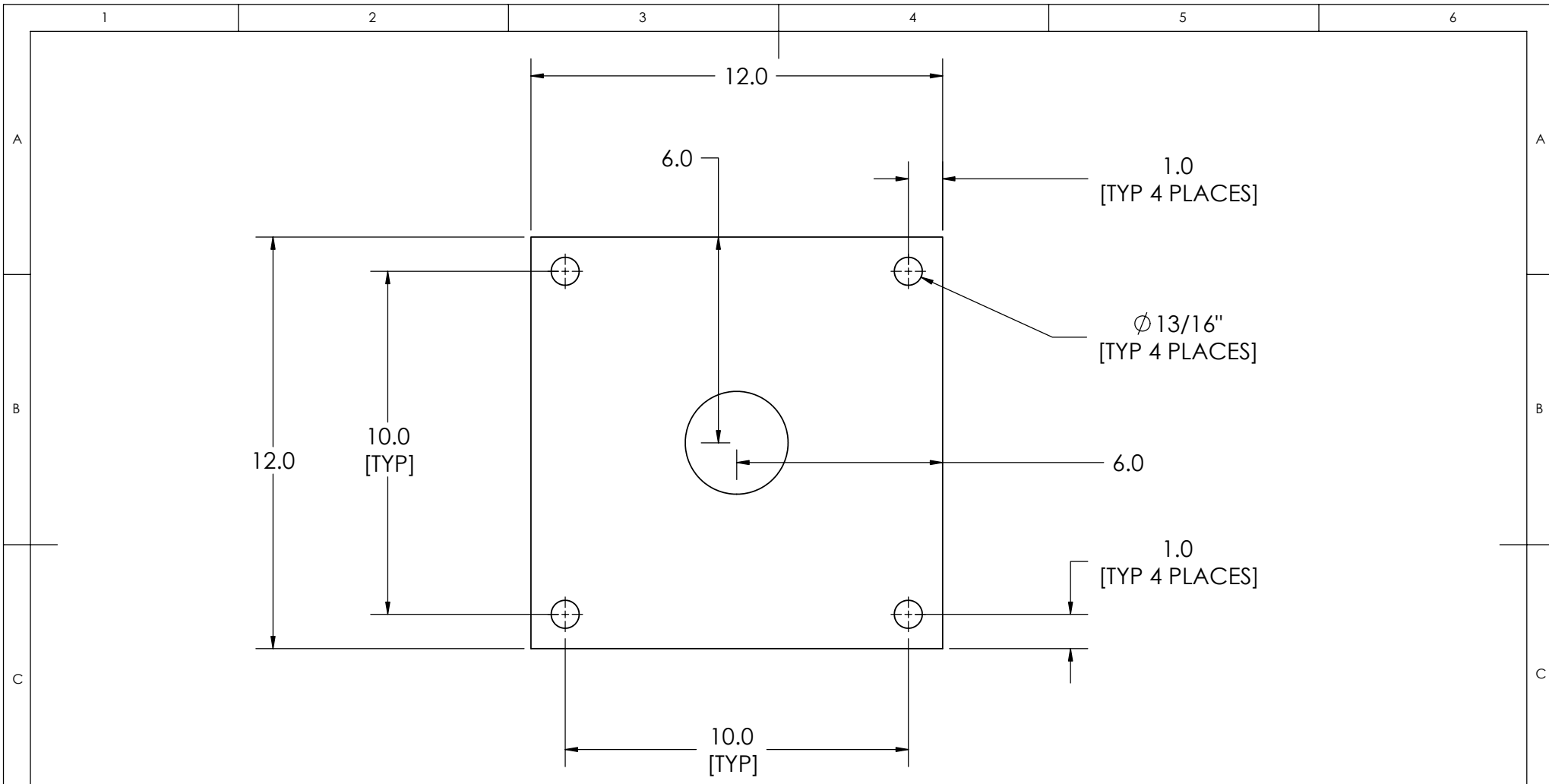


CAUTION!

DO NOT operate the charger if the mounting bracket and/or pedestal becomes damaged. Doing so may lead to severe injury and/or damage to the charger or vehicle.

SERVICE

For questions regarding the proper assembly, installation or maintenance of the LSV-100P, please call eTec at 1-888-etecevs (383-2387).



UNLESS OTHERWISE SPECIFIED: DIMENSIONS ARE IN INCHES SURFACE FINISH: TOLERANCES: LINEAR: +/- 0.05 ANGULAR: +/- 0.5		FINISH: PAINT, FLAT BLACK		DEBUR AND BREAK SHARP EDGES		DO NOT SCALE DRAWING		REVISION		
						ELECTRIC TRANSPORTATION ENGINEERING CORP.				
						TITLE: LSV-100 CHARGER BASE PLATE DETAIL				
						MATERIAL: 0.25 CR MILD STEEL		DWG NO.		A4
						WEIGHT:		SCALE:1:4		SHEET 1 OF 1
NAME	SIGNATURE	DATE								
DRAWN										
CHK'D										
APPV'D										
MFG										
Q.A										